

Inspire College

Culture | Learning | Libraries



Check out details of our
brand new College site
at High Pavement House,
Sutton-in-Ashfield!

SEE PAGE 21

Ofsted
Good rating



Aged 16 - 19*
in Nottinghamshire?

inspireculture.org.uk/college
learning@inspireculture.org.uk
0115 804 3611

*Up to 24 with an Education, Health and Care Plan (EHCP)

Find out more



@InspireLearning1624 @Learn_Inspire #BeInspired #InspireLearning

Inspire
Culture | Learning | Libraries

working with

**Nottinghamshire
County Council**

Education & Skills
Funding Agency

Welcome to Inspire College

Inspire College prepares young people not only for the world of work and further education, but for life.

"Eleven years on from my first day with Inspire, I'm prouder than ever to be part of an organisation that has a such a positive, life changing effect on the lives of so many young people across the county. It's an honour to lead a team of professionals who dedicate their working lives for the benefit of our learners and their progress. The 'extra mile' our staff go each and every day to enable all of our young people to thrive and feel they belong, is what makes our college unique. The relationships our young people form with our staff is the vital ingredient, enabling them to succeed where they may have struggled in the past.

Whatever your barriers to education, whatever negative experiences you've had in the past, I'm positive that you'll find our approach to your education a fresh and encouraging start. The rest is up to you!"

Simon Cook
Inspire College Manager



DID YOU KNOW?

WE CAN HELP COVER:

Meal, travel and other costs – as well as give you individualised help and support to reach realistic but challenging targets.

Contents

- | | | | |
|----|---|----|--|
| 02 | Welcome to Inspire College | 13 | Level 1 and 2 in Carpentry and Joinery |
| 04 | Work Experience | 14 | City & Guilds Health and Social Care Level 1 |
| 05 | Enrichment and Community Projects | 15 | City & Guilds Health and Social Care Level 2 |
| 06 | Information, Advice and Guidance | 16 | Sport – Level 1 and 2 |
| 07 | Employability and Personal and Social Development Level 1 and Level 2 | 17 | Access All Areas (AAA) – Personal and Social Development |
| 08 | City & Guilds Level 1 Certificate: Introduction to the Hospitality Industry | 18 | Meet the Tutor |
| 09 | City & Guilds Level 2 Diploma in Hospitality Services | 18 | Learner Case Study |
| 10 | Digital Promotion for Business – Level 2 | 19 | Traineeships |
| 11 | Maths and English | 20 | How to Enrol with Us |
| 12 | Level 1 in Bricklaying and Construction | 21 | New Location: High Pavement House |
| | | 23 | Learning Journey |
| | | 24 | Where Can I Learn? |

Reasons to choose Inspire College:



Small class sizes

Experienced staff who care about your progress and wellbeing

Individualised support

Inspiring courses in a range of subjects plus work placements, volunteering opportunities, traineeships and fun trips!

Earn as you learn you can earn up to £100 a month just for studying with us and child benefit is not affected

Public transport travel expenses covered/ reimbursed



Student experience case study

Learner at Hucknall

"What I love about Inspire College is that it's very easy-going and they always make sure to keep you together. When they're teaching, they ensure that you understand and that you're following – they're very nice!

If I were to look back from September to now, I would say that I'm more easy-going, and I know what I want to do. It feels really nice and empowering."

Work Experience

Work Experience is a vital ingredient of the Study Programmes offered at Inspire College and is tailored to suit the needs and experience of each individual young person.

It could be that you are yet to take your first steps into the workplace. It could be that you feel you're much closer to a job and are ready to take on something more substantial, such as two or three days a week with an employer over the period of a few months. Either way, we'll support you to reach your potential and your personal goals.

Inspire College recognises that a 'one size fits all' approach to work experience just doesn't work and we listen to your concerns and your ambitions to provide the best experience for you, regardless of your starting point.



Meet the Tutor: Jodi

Jodi is currently a tutor for Inspire College's Worksoop group

"I joined the Inspire team in December 2022 and am currently a tutor for Inspire College's Worksoop group. I have worked in Education for over 20 years and have had lots of experience in teaching and supporting young people with additional needs.

The course that the learners are working towards is designed to teach both the academic and life skills needed to help learners to reach their full potential. We ensure all lessons are fun and engaging and the best thing about my role is being able to support the learners with their journey to becoming more independent and successful young adults."



Enrichment and Community Projects

Below are just some of the enrichment and community projects you can get involved in throughout your time with us.

Forestry England

Our learners worked with Forestry England to develop outdoor and forestry skills, like shelter building, cooking, crafts and animal identification. They got to visit their local woodlands and find out more about the nature on our Nottinghamshire doorstep!



Helping the Community

Our local communities are a huge part of Inspire College. We love to go out and help – whether that's raising money for charities or even just cleaning up our local area.



Fun Projects

We work with local businesses and groups to provide interesting and fun projects for our students! In the past we've had students do social media takeovers for the Bassetlaw Museum, learn to sew cushion covers at Whitemeadow Furniture, been involved in the Point of View project, and more!



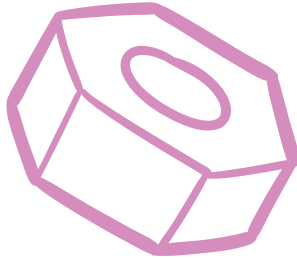
Information, Advice and Guidance

Our expert careers advisers can give you dedicated one-to-one support to help you decide your next steps after our courses.

This includes:

- Ensuring you have the required skills needed for your chosen career
- Support with creating a great CV, applications to colleges and workplaces, and interview skills
- The chance to listen to talks from a range of employers
- Workplace visits and work experience placements
- Opportunities to build your programme around a Traineeship

**Education, Health and Care Plan*



Work experience case study: Katie



Learner at Eastbourne House, Sutton-in-Ashfield

"I went to Inspire College to study Health and Social Care Level 2 and Level 3, as well as GCSE English, and Functional Skills Mathematics and I was fortunate to be able to complete two work experience placements, one in an adult care home setting and one in a day care centre. I thoroughly enjoyed my work experience placements and whilst completing them, I was able to use the skills and knowledge of person-centred care that I had attained during my course work, especially the safeguarding, equality, and diversity, understanding individual care needs units."

Employability and Personal and Social Development Level 1 and Level 2

We work with young people with a range of barriers to learning such as anxiety, behavioural issues, learning difficulties, social and emotional issues and disabilities.

We will enable you to gain further training or employment and to be responsible citizens who make a positive contribution to society. Above all, we aim to make learning with us fun, engaging and most of all, fulfilling, giving you the tools to make the next step in your journey.

AIM Awards Employability Skills are designed to encourage the development of values and personal attributes which contribute to success in the work place and support you to become emotionally, socially and physically healthy.

You will work towards AIM Awards consisting of different combinations of units, which aim to cultivate a positive attitude towards work and other people.

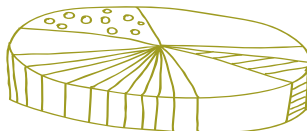
Award in Personal and Social Development includes:

- **Healthy Living**
- **Interpersonal Skills**

Certificate in Progression in Employability includes:

- **Stress Management**
- **Emotional Resilience**
- **Career Planning**
- **Health and Safety in the Workplace**
- **Assertiveness and Decision Making**

You will also take part in a range of enrichment activities which promote an understanding of equality, diversity and inclusion, and British Values.



Progression Routes:

- **Other Vocational Courses**
- **Traineeship**
- **Employment**

Locations:

- Worksop Library
- Retford Young People's Centre
- MyPlace @ Westfield Folkhouse Mansfield
- Hucknall Young People's Centre
- High Pavement House, Sutton-in-Ashfield
- Eastwood Young People's Centre
- Stapleford Young People's Centre
- Hawtonville Young People's Centre, Newark



City & Guilds Level 1 Certificate: Introduction to the Hospitality Industry

Are you interested in working in the Food and Drink Industry? Do you like talking to and meeting new people or do you like to work behind the scenes?

Mansfield has lots of work placements and jobs to offer in the food, drink, entertainment and hospitality industry. You might want to work as a Chef, Kitchen Assistant, Waiting Staff or Hotel Receptionist.

During your time with us you'll cover subjects such as: customer service; serving food and drink; using kitchen equipment; basic food preparation; and food safety.

No experience is necessary to join.

You can expect:

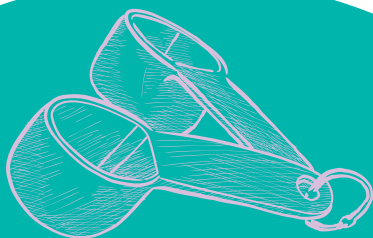
- **Tutors to use the most up-to-date teaching resources to make the classroom lively, fun and entertaining!**
- **Some classroom work – you can write, or word process your work using laptops**
- **Practical cookery sessions with your tutor, in small groups and with 1:1 help at all times**
- **Exciting trips relating to the hospitality industry such as hotels and restaurants, theme parks and leisure parks**
- **A choice of work placement or community projects to get involved in**

Progression Routes:

- **Level 2 Diploma in Hospitality Services**
- **Traineeship**
- **Apprenticeship**
- **Level 2 courses**
- **Employment**

Location:

- **MyPlace @ Westfield Folkhouse, Mansfield**



City & Guilds Level 2 Diploma in Hospitality Services



Our City & Guilds Level 2 Diploma in Hospitality Services is an excellent course if you are looking for a career in the Hospitality Industry or just want to improve your culinary skills.

This is a natural progression from the Level 1 Hospitality course and many of our learners make this their next step. This course is open to those who hold a Level 1 qualification in Hospitality or experience in the industry.

You can expect:

- To cover a range of practical and theoretical units in a purpose-built commercial kitchen to give you an idea of real-life experiences of a busy fast paced industry
- To learn the correct culinary knife skills and cutting techniques as well as producing complex meals from scratch
- To work as part of a team, offering customer service at real life events
- To gain a Level 2 Food Safety Qualification as well as the skills and ability to create dishes from a variety of ingredients using different cooking techniques

Progression Routes:

- Level 3 Diploma in Hospitality Services
- Traineeship
- Apprenticeship
- Employment
- Level 3 courses

Locations:

- High Pavement House, Sutton-in-Ashfield



Learn in state of the art facilities at our new centre in

High Pavement House, Sutton-in-Ashfield!

Digital Promotion for Business – Level 2

This course covers a range of topics and enables you to develop your understanding of how to use different digital and offline techniques to attract customers to a business and convert online searches to sales, as well as practising and improving your IT skills.

You could also boost your CV and career opportunities with a work-related qualification.

Topics covered include:

- Social media
- Search Engine Optimisation
- Producing digital content

And insights into digital media and it's place in the world.

You will benefit from a supportive, relaxed learning environment with excellent support, learning through formal learning activities, projects, presentations and practical work.

With the growth of digital technology, this qualification will enable you to make use of ICT within a number of job roles where use of digital technology is a required knowledge and skill set.

Progression Routes:

- Level 3 City & Guilds Qualification
- Traineeship
- Apprenticeship
- Employment

Location:

- MyPlace @ Westfield Folkhouse, Mansfield

DID YOU KNOW?

...that nearly 80% of the UK workforce use IT in the workplace? IT improves productivity and organisations are using digital technologies to save almost 20% of time in their working week.



Maths and English

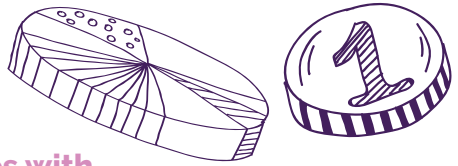
Included alongside your main study programme

Employers are looking for candidates with qualifications in Maths and English, and the underpinning skills that these give, so they can be sure that you can operate with confidence in a working environment.

Employers want to see young people who are confident with numbers, able to communicate effectively, and who can understand written and verbal instructions. Therefore, Maths and English are a key part of our Study Programmes.

We provide GCSEs (9-1) in English Language and Mathematics. Depending upon your previous grades and experience, we'll place you on a Maths and English programme that suits you. This could be Functional Skills, or GCSE.

Functional Skills aim to place Maths and English within real world contexts, whether in the workplace or just your everyday life. It could relate to working out the right amount of wallpaper to buy, the number of bricks to use, or it could be writing a job application or a letter of complaint to your local MP! The emphasis is on **FUNCTIONAL** – the things that help you function effectively at work and in life.



DID YOU KNOW?

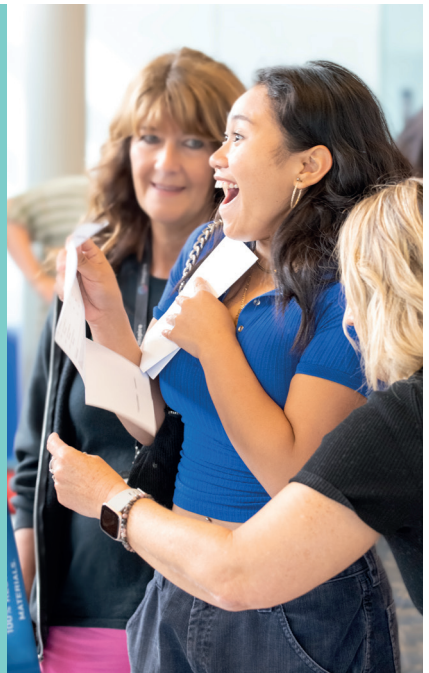
We provide GCSEs (9-1) in English Language and Maths, and have a resit pass rate that is above the national average.

Inspire College Students: GCSE Testimonies

"I've just passed my maths and all of my AIM Awards. I'm super excited, and I can't wait to see what the world brings for me! Inspire's helped me a lot – I've built my confidence and they've given me the ability to pass my GCSEs. In my secondary school I just wasn't able to do it, and Inspire's helped me so much with that."

"Before I joined Inspire, I struggled with my mental health – Inspire basically saved my life! Somehow, I also got my GCSEs, and I got a grade 6!"

"I just passed my maths GCSE, I got a grade 5 and I can't believe it – what an incredible journey I went through from September to now. It's just unbelievable! I need to thank my maths teacher, because without her I couldn't have done what I did. I'm very grateful, I really am."



Level 1 in Bricklaying and Construction

Interested in pursuing a career in construction? Our course at Sutton-in-Ashfield could provide you with your first steps into the industry.

New students will enter at Level 1. Progression throughout the course will be assessed by the completion of theory and practical work modules.

No final test examinations are required to complete the learning, just ongoing evidence of you performing real construction tasks, such as:

- Learning the mandatory health and safety requirements for all persons working in industry
- Learning, using and developing brickwork trowel skills
- The basic principles of brickwork construction, setting out, building level, plumb and to gauge
- Building half brick wide walls, one brick wide walls, cavity walls and block walling

Progression Routes:

- Level 2 Course in Bricklaying
- Other Vocational Courses
- Traineeship
- Apprenticeship
- Employment

Location:

- High Pavement House, Sutton-in-Ashfield



Learn in state of the art facilities at our new centre in

High Pavement House, Sutton-in-Ashfield!

Level 1 and 2 in Carpentry and Joinery

Want to learn the skills and progress in the vocational areas of Carpentry and Joinery?

Many learners in the past have moved on from here to gain employment within the industry. You will gain the skills needed to be competent in this vocational area.

Skills such as:

- Health and safety in the workplace
- Knowledge of hand tools
- Knowledge of basic joinery processes
- Knowledge of fixings and materials

Your skills will be assessed over the year rather than having an end test.

Our programmes also give you a chance to develop skills such as communicating with others, working as a part of a team, improving your confidence before you take that next step towards becoming employed.

Progression Routes:

- Level 2 Carpentry and Joinery
- Other Vocational Courses
- Traineeship
- Apprenticeship
- Employment

Location:

- High Pavement House, Sutton-in-Ashfield



Learn in state of the art facilities at our new centre in

**High Pavement House,
Sutton-in-Ashfield!**

City & Guilds Health and Social Care Level 1

Our Level 1 Health and Social Care programme will introduce you to the sector by exploring the range of roles, provisions and personal qualities.

We aim to build an awareness of the protection of vulnerable adults and the safeguarding of children and look at the policies and procedures that are in place to support this.

You can expect to learn:

- **Signs of harm, abuse and neglect and know what to do if you encounter these**
- **To identify verbal and non-verbal communication and methods that may help to remove barriers**
- **The importance of equality and inclusion in care and how carers can ensure this takes place**
- **The laws that enforce equality and inclusion**

Specific to children, you can expect to learn:

- **The expected pattern of growth and development (0-19 years)**
- **Communication**
- **Intellectual, social, emotional and behavioural factors that may affect physical growth and development**
- **The effects of ageing later in life**

You will be introduced to dementia and why it is important to recognise and value individuals with dementia.

You will look at the causes, effects on family members and carers and the benefits of effective communication.

The course also offers the opportunity to develop techniques to facilitate communication with those living with dementia.

Progression Routes:

- **Level 2 Health and Social Care**
- **Other vocational courses**
- **Traineeship**
- **Apprenticeship**
- **Employment**

Locations:

- High Pavement House, Sutton-in-Ashfield
- MyPlace @ Westfield Folkhouse, Mansfield



City & Guilds Health and Social Care Level 2

As part of the Level 2 programme, you will achieve a Level 2 Certificate in Preparing to Work in Adult Social Care, gaining in-depth knowledge and understanding of the 9 main topics that are relevant to working in the adult social care sector, such as:

- Introduction to duty of care in health, social care or children's and young people's settings
- Principles of communication in adult social care settings
- Principles of personal development in adult social care settings
- Principles of diversity, equality and inclusion in adult social care settings
- Principles of safeguarding and protection in health and social care
- Understanding the role of the social care worker
- Understanding person centred approaches in adult social care settings
- Understanding health and safety in social care settings
- Understanding how to handle information in social care settings

This is an excellent opportunity to learn how to apply the principles of person-centred approaches in a safe and effective manner.

Learn in state of the art facilities at our new centre in

High Pavement House, Sutton-in-Ashfield!



Progression Routes:

There are opportunities to accredit prior learning should you continue your learning via a traineeship or apprenticeship, providing you with a great starting point for a career in adult social care.

You can even go on to an Access to Higher Education course. Find out more at inspireculture.org.uk/accesstohe

Location:

- High Pavement House, Sutton-in-Ashfield



Sport – Level 1 and 2

Are you interested in working in the sports industry? Do you have a passion for keeping fit and encouraging others to engage in sport? If so, Inspire College have a new and exciting full-time programme at Beeston Youth and Community Centre.

Topics covered include:

- Physical Fitness and Injuries in Sport
- Developing Sporting Skills and Tactical Awareness
- Participating in Sport
- Sports Coaching
- Performance Analysis
- Anatomy and Physiology for Exercise
- Planning and Running a Sports Event

Progression Routes:

- Employment
- Traineeship
- Further Education

Location:

- Beeston Youth and Community Centre



Access All Areas (AAA) – Personal and Social Development

The Access All Areas (AAA) programme was created to help young people with learning difficulties and disabilities improve their skills and independence.



Progression Routes:

- Vocational Courses
- Traineeship

Locations:

- MyPlace @ Westfield Folkhouse, Mansfield
- Worksop Library

Young people are encouraged, supported and trained to take control of their own life and create a path forward for themselves by following our tailored programmes.

We cover many subjects throughout the year.

You can expect to learn:

- Personal and emotional resilience
- Work placements
- Building confidence and self-esteem
- Independent living skills
- Health and safety



Case study: Megan

AAA Learner

"I like the Inspire course because it helps me with my confidence skills, it helps me with my writing, and it's really enjoyable.

My tutor Becky is brilliant because she helps me with my work, and she's really kind – she has a kind personality and is a kind human being. She's a really good teacher!

I've changed a lot! I'm more confident than I was in September, and I've made more friends than I have ever made in my life. College is better than school because I used to get bullied in school, and College has really helped me overcome bullying and is a lot better for me.

People should come to Inspire College because it's the best college in the world!"

Meet the Tutor

Tutor experience:

At our Newark base

"Working for Inspire has been one of the best experiences of my career. I came to realise that management in education was not as fulfilling as having a class full of learners; I needed to get back to teaching, to have the face-to-face contact with challenging learners that leads to job satisfaction.

Inspire has given me the opportunity to make a very real and immediate difference in the lives of young people who have been let down and, in many instances, excluded from the education system locally. I feel, along with all my colleagues at Inspire, that I am doing a very worthwhile job, helping young people increase their knowledge and skills, their self-confidence and self-esteem, and start to look forward to a future where they can choose between further education or moving into the world of work with the qualifications and experience to thrive."

...Inspire has given me the opportunity to make a very real and immediate difference in the lives of young people who have been let down and, in many instances, excluded from the education system locally...

Learner Case Study

Case study:

... I am more confident than ever...

Learner at Eastwood

"The course has helped me because before I came here, my confidence was low and now it's quite high – I now volunteer at the library which I wouldn't have done before. Now I've come here, they've helped me overcome my fear of jobs and things like that. I feel quite proud of myself – proud of myself that I can do stuff that I want to do. I'm more confident than ever.

You should come to Inspire College because they're very supportive of what you want to do. They praise you, they help you whenever you need it, and they make you reach your goals."



FIND OUT MORE

Traineeships

A Traineeship is a study programme for young people aged 16-24 who want to spend less time in the classroom and more time in the workplace. They're designed to help you gain the vital experience and skills to improve your chances of getting an apprenticeship or employment.

Traineeships can last up to a year and enhance your CV and will include:

Work preparation and employability training provided by us at one of our 9 bases.

Support from an Inspire College tutor, as well as a sector based work placement mentor.

An English and Maths qualification (even if you've already gained a C or a 4, you can still work towards Functional Skills to add that extra value to your CV).

A high-quality work experience placement with an employer. Inspire have a number of established employers who offer opportunities to our young people each year.

In addition to these basic elements, you'll cover Equality, Diversity and Inclusion and British Values, which are vital in the modern workplace.

At the end of the traineeship, each young person will be guaranteed a job interview at that workplace if a role becomes available, or an exit interview together with support from their tutor to help them secure an apprenticeship or a position with another employer.



Case study: Kieran

Traineeship Placement at Unity Engineering

"It's been a fantastic placement; I've got on well with everyone here and I've built up my confidence by doing things I've not done before. It's been a fantastic taste of what work in in the engineering world is like.

It's quite fascinating really."


How to Enrol with Us

Call: 0115 804 3611

Email: learning@inspireculture.org.uk

Visit: inspireculture.org.uk/college

 @InspireLearning1624

 @Learn_Inspire

#BeInspired #InspireLearning





We're thrilled that Inspire College at Eastbourne House, Sutton-in-Ashfield has relocated to our brand new Inspire High Pavement Learning Centre.

Discover a vibrant and supportive setting to learn and thrive with a range of inspiring college courses for young people at our brand new state of the art learning centre in the heart of Ashfield.

- Purpose built workshop space for our construction and joinery courses.
- Commercial kitchen facilities for our hospitality and catering courses.
- Access to fantastic digital and technology resources to support your studies.
- Quiet study spaces.
- Spaces to socialise, have fun, meet new people and make new friends.

You can find full details of the study options available inside this prospectus.

Supporting your studies, supporting your success!

INSPIRE YOUTH ARTS

**CAN ALL YOUNG
PEOPLE MAKE
GREAT ART?
WE THINK SO!**

We work across Nottinghamshire from our home at The Old Library arts centre in Mansfield with children, young and disabled people at the heart of what we do.



**MUSIC
DANCE
DIGITAL
THEATRE
FILM**



INSPIRE CULTURE.ORG.UK/IYA | IYA@INSPIRE CULTURE.ORG.UK

Learning Journey



Level 7

- NVQ Level 7
- Vocational Qualifications Level 7
- Master's Degree
- Postgraduate Certificate & Diplomas
- Postgraduate Certificate in Education (PGCE)

Level 8

- Vocational Qualifications Level 8
- Doctoral Degrees (PHD)

Level 6

- NVQ Level 6
- Vocational Qualifications Level 6
- Bachelor's Degrees with honours
- Bachelor's Degrees
- Graduate Certificate & Diploma

Level 4

- NVQ Level 4
- Vocational Qualifications Level 4
- Higher National Certificate (HNC)
- Certificate of Higher Education (Cert Ed)

Level 5

- NVQ Level 5
- Vocational Qualifications Level 5
- Higher National Certificate & Diploma (HNC/HND)
- Foundation Degrees
- Diplomas in Higher Education (dipHE)

Level 3

- NVQ Level 3
- Vocational Qualifications Level 3
- GCSE AS & A Levels
- Advanced Diplomas

Level 2

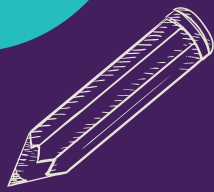
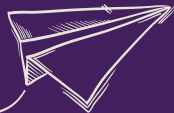
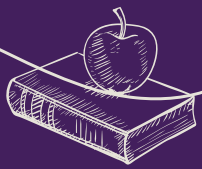
- NVQ, Vocational Qualifications & Functional Skills Level 2
- GCSE Grade A*-C / 4-9
- Intermediate Diplomas

Level 1

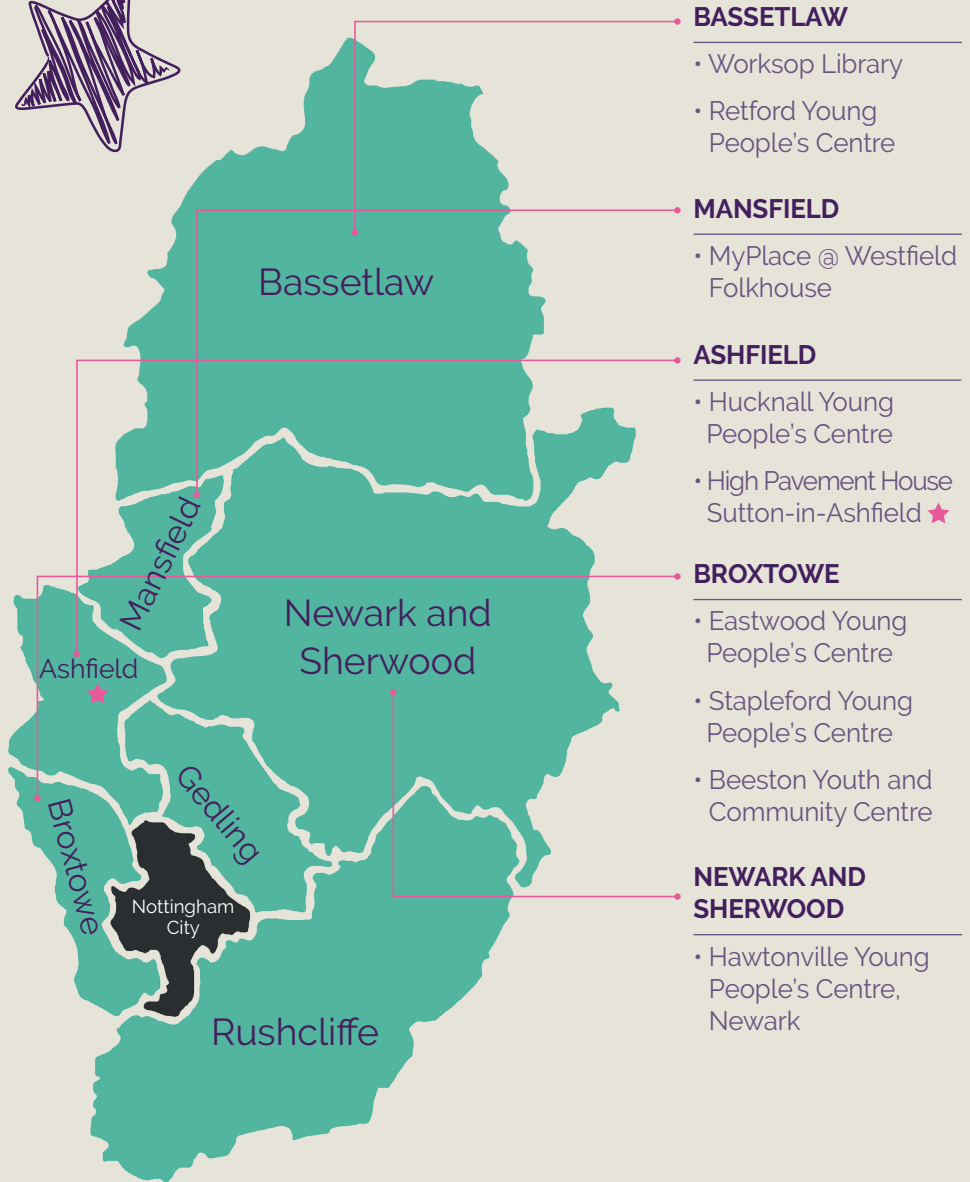
ENTRY LEVEL

- Entry level certificates & Functional Skills

- NVQ, Vocational Qualifications & Functional Skills Level 1
- GCSE Grade D-G / 1-3
- Foundation Diplomas



Where Can I Learn?



Publications are available on our website at www.inspireculture.org.uk and can be accessed using a screen reader. We can also provide alternative formats on request to comms@inspireculture.org.uk

Please note: Information included in the guide may be subject to change. For up-to-date information, please visit www.inspireculture.org.uk or call 0115 804 3611.

Contact: 0115 804 3611 | learning@inspireculture.org.uk | inspireculture.org.uk/college