

Inspire College

Culture | Learning | Libraries




Ofsted
Good rating



"INSPIRING
YOUNG PEOPLE"



Referrers' Guide

inspireculture.org.uk/college

0115 804 3611 | learning@inspireculture.org.uk

Find out more



 @InspireLearning1624  @Learn_Inspire #BeInspired #InspireLearning

 **Inspire**
Culture | Learning | Libraries

working with

 Nottinghamshire
County Council

 Education & Skills
Funding Agency

Welcome to Inspire College

Inspire College prepares young people not only for the world of work, but for life!

Who We Are

Inspire is a Community Benefit Society created in 2016 to deliver a wide range of services for Nottinghamshire County Council. Our activity inspires people to read, learn, and enjoy culture, and our Inspire College provision offers a versatile and supportive programme for 16 to 19-year-olds (up to 24 with an Education, Health, and Care Plan).

"Eleven years on from my first day with Inspire, I'm prouder than ever to be part of an organisation that has a such a positive, life changing effect on the lives of so many young people across the county. It's an honour to lead a team of professionals who dedicate their working lives for the benefit of our learners and their progress. The 'extra mile' our staff go each and every day to enable all of our young people to thrive and feel they belong, is what makes our college unique. The relationships our young people form with our staff is the vital ingredient, enabling them to succeed where they may have struggled in the past.

Whatever the barriers to education, whatever negative experiences a young person has had in the past, I'm positive they'll find our approach to their education a fresh and encouraging start.

Simon Cook

Inspire College Manager

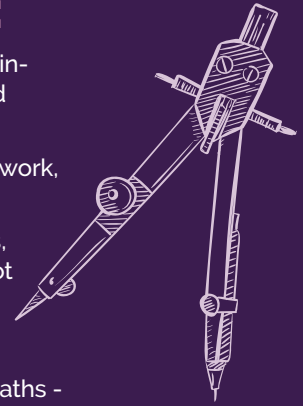
Contents

- | | |
|--|--|
| 02 Welcome to Inspire College | 09 Health and Social Care |
| 03 Inspire College at a Glance | 10 Bricklaying and Construction |
| 04 Maths and English | 11 Carpentry and Joinery |
| 05 Information, Advice and Guidance | 12 Hospitality and Catering |
| 05 Work Experience and Placements | 13 Digital Promotion for Business |
| 06 Traineeships | 14 Sport |
| 07 Employability and Personal and Social Development | 15 Contact Us |
| 08 Access All Areas (AAA) – Personal and Social Development | |

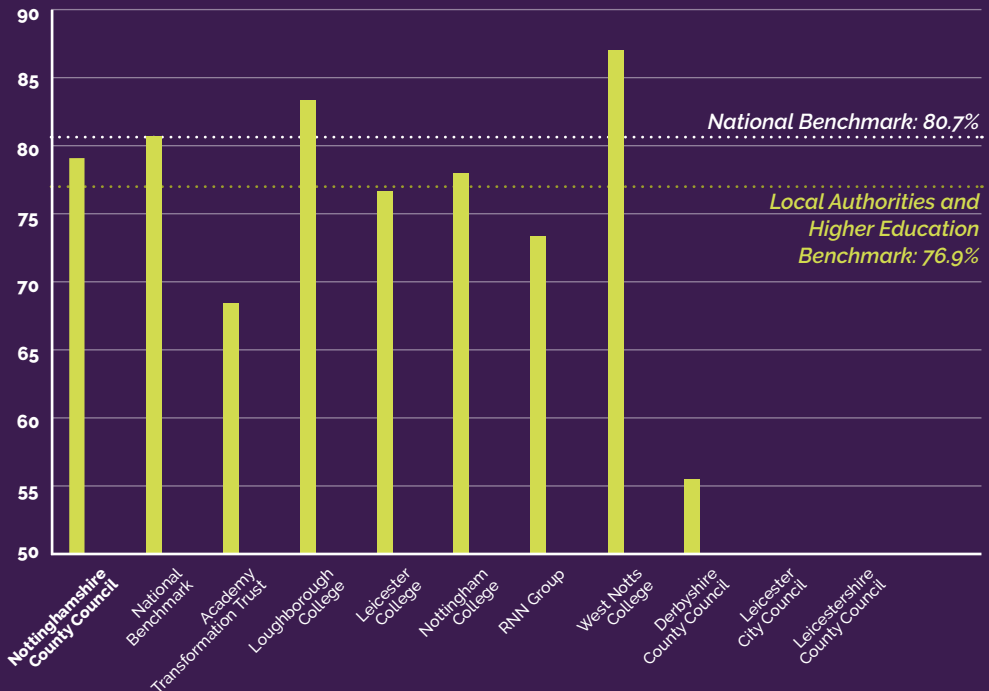


Inspire College at a glance:

- 9 bases across Nottinghamshire in Newark, Mansfield, Sutton-in-Ashfield, Stapleford, Retford, Eastwood, Hucknall, Beeston and Worksop.
- A range of inspiring courses to help prepare young people for work, but more importantly for life.
- Learners can earn up to £100 a month just for studying with us, as well as receive help with travel costs (and child benefit is not affected).
- Our 2022 resit pass rate was 43% in English and 65% in maths.
- In 2023 we achieved a pass rate of 41% in English and 71% in maths - vastly above the national resit pass rate of 25.9% in English and 16.4% in maths.



■ All Qualifications



- For the academic year 2021/22, Inspire Learning's overall achievement rate of 79.2% was only 1.5% lower than the National Benchmark (80.7%), but 2.3% higher than the benchmark for other providers in our category of 'Other Public Funded i.e. Local Authorities and Higher Education'.

Maths and English

GCSE Resits and Functional Skills

Employers are looking for candidates with qualifications in maths and English, and the underpinning skills that these give.

Employers want to see young people who are confident with numbers, able to communicate effectively, and who can understand written and verbal instructions. Therefore, maths and English are a key part of our study programmes.

We provide GCSEs (9-1) in English Language and Mathematics. Depending on a student's previous grades and experience, they'll be placed on a maths and English programme to suit them. This could be Functional Skills or GCSE.

Functional Skills aim to place maths and English within real world contexts, whether in the workplace or just everyday life.

Our GCSE re-sit results are consistently above the national average. In 2022, we had a resit pass rate of 43% in English and 65% in maths, and in 2023 we achieved a pass rate of 41% in English and 71% in maths - vastly above the national resit pass rate of 25.9% in English and 16.4% in maths.

Inspire College Students: GCSE Testimonies

"I've just passed my maths and all of my AIM Awards. I'm super excited, and I can't wait to see what the world brings for me! Inspire's helped me a lot – I've built my confidence and they've given me the ability to pass my GCSEs. In my secondary school I just wasn't able to do it, and Inspire's helped me so much with that."

"Before I joined Inspire, I struggled with my mental health – Inspire basically saved my life! Somehow, I also got my GCSEs, and I got a grade 6!"

"I just passed my maths GCSE, I got a grade 5 and I can't believe it – what an incredible journey I went through from September to now. It's just unbelievable! I need to thank my maths teacher, because without her I couldn't have done what I did. I'm very grateful, I really am."



Information, Advice and Guidance

Our expert careers advisors can give learners dedicated one-to-one support to help them decide their next steps after our courses.

This includes:

- Ensuring they have the required skills for their chosen career
- Support with creating a great CV, applications to colleges and workplaces, and interview skills
- The chance to listen to talks from a range of employers
- Workplace visits and work experience placements



Work Experience and Placements

Work experience is a vital ingredient of Inspire College's study programmes and is tailored to suit the needs and experience of each individual young person.

Whether a learner is yet to take their first steps into the workplace, or if they want to take on something more substantial, such as two or three days a week with an employer over the period of a few months, we'll support them to reach their full potential and their personal goals.

Inspire College recognises that a 'one-size-fits-all' approach to work experience just doesn't work - instead, we listen to a learner's concerns and ambitions to provide the best experience for them, regardless of their starting point.



Traineeships

A Traineeship is a study programme for young people who want to spend less time in the classroom, and more time in the workplace. They're designed to help you gain the vital experience and skills to improve your chances of getting an apprenticeship or employment. Traineeships can last up to a year and enhance a learner's CV.

The traineeship will include:

- Work preparation and employability training at one of our 9 bases.
- An English and maths qualification (even if a learner already gained a C or a 4, they can still work towards Functional Skills to add that extra value to their CV).
- A high-quality work experience placement with an employer. Inspire has a number of established employers who offer opportunities to our young people every year.
- Support from an Inspire College tutor, as well as a sector-based work placement mentor.

In addition to these basic elements, all learners will cover Equality, Diversity and Inclusion and British Values, which are vital in the modern workplace.

At the end of the Traineeship, each young person will be guaranteed a job interview at that workplace if a role becomes available, or an exit interview together with support from their tutor to help them secure an apprenticeship or a position with another employer.

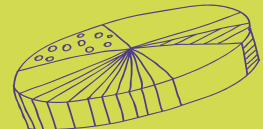


Case study: Kieran

Traineeship Placement at Unity Engineering

"It's been a fantastic placement; I've got on well with everyone here and I've built up my confidence by doing things I've not done before. It's been a fantastic taste of what work in in the engineering world is like.

It's quite fascinating really."



Employability and Personal and Social Development

Levels 1 and 2

We work with young people with a range of barriers to learning, such as anxiety, learning difficulties, social and emotional issues and disabilities. We enable learners to gain further training or employment and to be responsible citizens who make a positive contribution to society.

AIM Awards Employability Skills are designed to encourage the development of values and personal attributes which contribute to success in the workplace and support learners to become emotionally, socially and physically healthy.

Award in Personal and Social Development includes:

- Healthy Living
- Interpersonal Skills

Certificate in Progression in Employability includes:

- Stress management
- Emotional resilience
- Career planning
- Health and Safety in the Workplace
- Assertiveness

Progression routes:

- Other vocational courses
- Traineeship
- Employment

Location:

- Workshop Library
- Retford Young People's Centre
- MyPlace @ Westfield Folkhouse, Mansfield
- Hucknall Young People's Centre
- High Pavement House, Sutton-in-Ashfield
- Eastwood Young People's Centre
- Stapleford Young People's Centre
- Hawtonville Young People's Centre, Newark



Access All Areas (AAA) – Personal and Social Development

The Access All Areas (AAA) programme helps young people with learning difficulties and disabilities improve their skills and independence.

Young people are encouraged, supported and trained to take control of their own life and create a path forward for themselves by following our tailored programmes.

We cover:

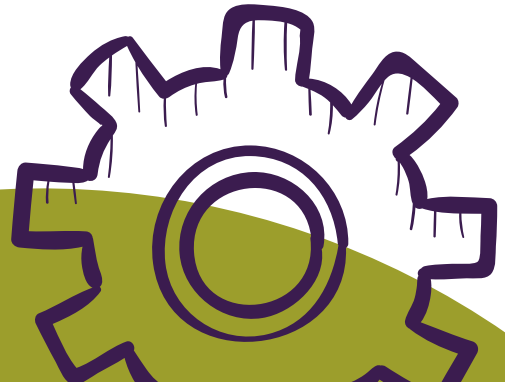
- Personal and emotional resilience
- Work placements
- Independent living skills
- Health and safety
- Building confidence and self-esteem

Progression routes:

- Vocational courses
- Traineeship

Location:

- MyPlace @ Westfield Folkhouse, Mansfield
- Worksoop Library



Case study: Megan

AAA Learner

"I like the Inspire course because it helps me with my confidence skills, it helps me with my writing, and it's really enjoyable.

My tutor Becky is brilliant because she helps me with my work, and she's really kind – she has a kind personality and is a kind human being. She's a really good teacher!

I've changed a lot! I'm more confident than I was in September, and I've made more friends than I have ever made in my life. College is better than school because I used to get bullied in school, and College has really helped me overcome bullying and is a lot better for me.

People should come to Inspire College because it's the best college in the world!"

Health and Social Care

Levels 1 and 2

Our Level 1 Health and Social Care programme introduces learners to the sector by exploring the range of roles, provisions and personal qualities. We aim to build an awareness of the protection of vulnerable adults and the safeguarding of children and look at the policies and procedures that are in place to support this.

Learners achieve a Level 2 Certificate in Preparing to Work in Adult Social Care by gaining in-depth knowledge and understanding of the main topics relevant to working in the adult social care sector.

Topics include:

- Introduction to duty of care in health, social care or children's and young people's settings.
- Principles of diversity, equality and inclusion in adult social care settings.
- Principles of safeguarding and protection in health and social care.

Progression routes:

- Other vocational courses
- Traineeship
- Apprenticeship
- Employment
- Access to Higher Education course

Location:

- High Pavement House, Sutton-in-Ashfield
- MyPlace @ Westfield Folkhouse, Mansfield



Bricklaying and Construction

Level 1

Our course at High Pavement House, Sutton-in-Ashfield, can help provide learners with their first steps into the construction and bricklaying industry.

New students enter at Level 1, and progression throughout the course will be assessed by the completion of theory and practical work modules.

This course has no final test examinations to complete the learning - learners just have to provide evidence of construction tasks, such as:

- Learning the mandatory health and safety requirements for all persons working in the industry.
- Learning, using, and developing brickwork trowel skills.
- The basic principles of brickwork construction, setting out, building level, plumb and to gauge.
- Building half brick wide walls, one brick wide walls, cavity walls, and block walling.

Progression routes:

- Level 2 Course in Bricklaying
- Other vocational courses
- Traineeship
- Apprenticeship
- Employment

Location:

- High Pavement House, Sutton-in-Ashfield



Carpentry and Joinery

Levels 1 and 2

Many students from our Carpentry and Joinery courses have gained employment within the industry.

Learners will gain the skills needed to be competent in this vocational area, as well as communication and teamwork skills.

We cover:

- Health and safety in the workplace
- Knowledge of hand tools
- Knowledge of basic joinery processes
- Knowledge of fixings and materials

These skills will be assessed over the year, rather than having an end test examination.

Progression routes:

- Level 2 Carpentry and Joinery
- Other vocational courses
- Traineeship
- Apprenticeship
- Employment

Location:

- High Pavement House, Sutton-in-Ashfield



Hospitality and Catering

Levels 1 and 2

Mansfield and Ashfield have lots of work placements and jobs to offer in the food, drink, entertainment and hospitality industry. A learner might want to work as a Chef, Kitchen Assistant, Waiting Staff or Hotel Receptionist.

During their time with us, they'll cover subjects such as: customer service; serving food and drink; using kitchen equipment; basic food preparation; and food safety. Learners can progress to our Level 2 Diploma in Hospitality Services where they can further their skills.

As part of our Hospitality courses, young people can expect:

- Practical cookery sessions.
- Exciting trips relating to the hospitality industry such as hotels and restaurants, theme parks, and leisure parks.
- A choice of work placement or community projects to get involved with.
- The chance to work at real events, cooking and serving food.

Progression routes:

- Traineeship
- Apprenticeship
- Other Level 2 courses
- Employment

Location:

- MyPlace @ Westfield Folkhouse, Mansfield
- High Pavement House, Sutton-in-Ashfield



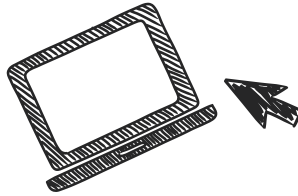
Digital Promotion for Business

Level 2

This course enables a learner to develop their understanding of how to use different digital and offline techniques to attract customers to a business and convert online searches to sales, as well as practicing and improving their IT skills.

Topics covered include:

- Social media
- Search Engine Optimisation
- Producing digital content



Progression routes:

- Level 3 City & Guilds qualification
- Traineeship
- Apprenticeship
- Employment

Location:

- MyPlace @ Westfield Folkhouse, Mansfield

This qualification will enable them to make use of ICT within a number of job roles where use of digital technology is a required knowledge and skill set.



Sport

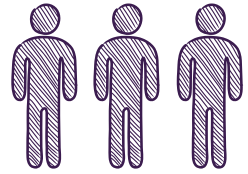
Levels 1 and 2

Are you interested in working in the sport's industry?

Do you have a passion for keeping fit and encouraging others to engage in sport? If so, Inspire College have a new and exciting full-time programme at Beeston Youth and Community Centre.

Topics covered include:

- Physical Fitness and Injuries in Sport
- Developing Sporting Skills and Tactical Awareness
- Participating in Sport
- Sports Coaching
- Performance Analysis
- Anatomy and Physiology for Exercise
- Planning and Running a Sports Event



Progression routes:

- Employment
- Traineeship
- Further education

Location:

- Beeston Youth and Community Centre



Contact Us

Our bases:

Beeston Youth and Community Centre
NG9 1GL

Eastwood Young People's Centre
NG16 3SG

Hawtonville Young People's Centre
Newark, NG24 4HX

High Pavement House
Sutton-in-Ashfield, NG17 1BT

Hucknall Young People's Centre
NG15 7TX

MyPlace at the Westfield Folkhouse
Mansfield, NG18 1TL

Retford Young People's Centre
DN22 6EA

Stapleford Young People's Centre
NG9 8GB

Workshop Library
S80 2BP

Email: learning@inspireculture.org.uk

Call: 0115 804 3611

Will Munday

Learning Engagement Officer

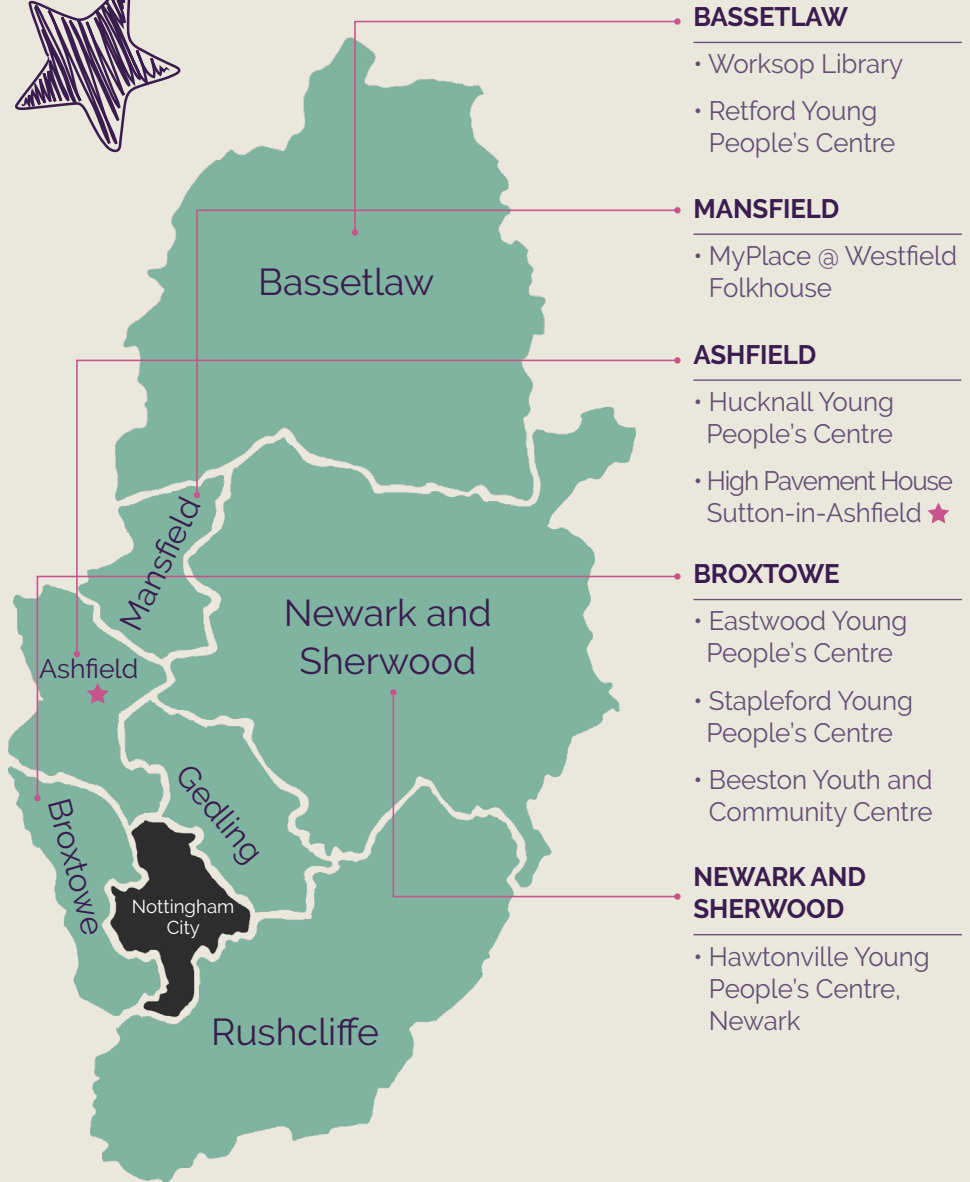
Email: william.munday@inspireculture.org.uk

Call: 07990657673



We welcome
invitations to
attend your careers
events and talks –
**please get in
touch!**

Where Can I Learn?



Publications are available on our website at www.inspireculture.org.uk and can be accessed using a screen reader. We can also provide alternative formats on request to comms@inspireculture.org.uk

Please note: Information included in the guide may be subject to change. For up-to-date information, please visit www.inspireculture.org.uk or call 0115 804 3611.

Contact: 0115 804 3611 | learning@inspireculture.org.uk | inspireculture.org.uk/college